



Vintech
Hydraulics

AS ISO 9001:2015 CERTIFIED COMPANY



**CUSTOMER
SATISFACTION
IS OUR AIM**



VINTECH
MEANS
HYDRAULICS

www.vintechhydraulics.in
www.vintechhydraulics.com

Contact

+91 85117 62085
+91 78748 64292





ABOUT US

Our Immensely Popular Business Enterprise, Vintech Hydraulics, Is The Pride Of Indian Industrial Sector. We Are Excelling Offering Clients With Superior Quality Bell Housing, Hydraulic Hose Pipes, Hone Tubes, Hydraulic Internal Gear Pump, Chrome Plating Rods, Etc., Since 2017. We Are Constantly Working Hard To Improve Our Range As Per The Changing Requirements Of Clients And Evolving Industrial Segment. From Our Surat (Gujarat, India) Based Establishment, We Promise To Always Dispatch A Properly Tested Assortment, Which Adheres To The International Quality & Design Standards Perfectly. We Promise To Make Super Fast Deliveries Of Our Quality Accredited Range, In Order To Provide Maximum Gratification To Clients.

WHY CHOOSE VINTECH?

We Have Achieved A Remarkable And Strong Position In The Market Due To Our Excellent Quality Range Of Products That We Provide In Several Specifications. Following Are The Some Of The Unique Reasons Due To Which We Have Achieved The Belief Of Our Valued Patrons:

- Highly Experienced Professionals
- Timely Delivery
- Excellent Logistic Facility
- Client-centric Approach
- Fair Business Practice
- Qualitative Range Of Products
- Wide Distribution Network
- Positive Record

OUR VISION

To develop bench mark innovations and technologies to suit the changing requirements of the customers & the industry by continuous investments in updating our manufacturing & human resources.
To provide total customer satisfaction through quality products and services at competitive costs.
To attain the leadership in technology, quality, services and costs with integrity and stability.



OUR MISSION

To follow the best practices as a responsible corporate and contribute in sustainable development of the society including employees. To preserve and enhance the integrity in all our business dealings by continuous monitoring, control and interventions without any compromises and concessions. To achieve leading position in each of our business sector by sustainable and profitable growth creating long term wealth for the shareholders To provide total customer satisfaction through quality products and services at competitive costs. To make continuous up gradation in our products through innovation anticipating the needs of our markets and customers.



CUSTOMER SATISFACTION IS OUR AIM

CERTIFIED



OUR PRODUCT RANGE



HYDRAULICS

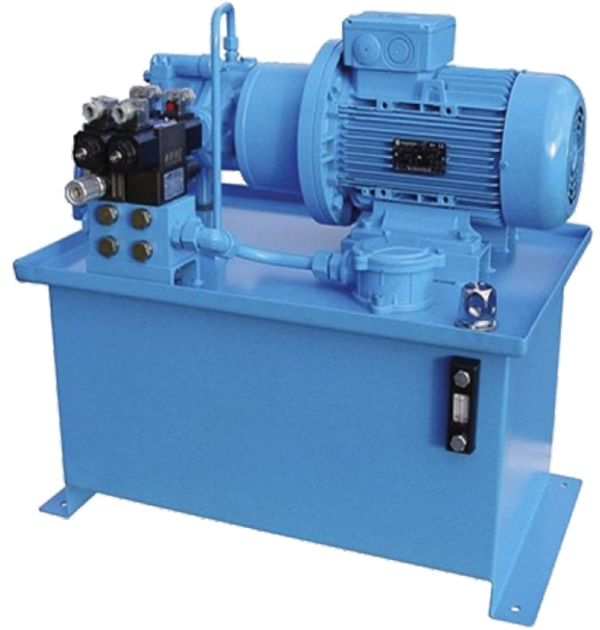
- Hydraulic Ac/Dc Power Packs
- Pressure Gauges
- Solenoid Valves & Accessories
- Hard Chrome Rod & Hone Tubes.
- Hydraulic Cylinders
- Hydraulic Jacks
- Hydraulic Hose Pipes & Fittings
- Direction Control Valves
- Hydraulic Pumps & Motors

HYDRAULIC AC POWER PACK

Hydraulic Power Packs Are Custom Built And Of Standard Design Hydraulic Power Packs Are Made Available By Us In Both Standard As Well As Custom Finished Designs As Per The Specific Application Demands Of The Customers. These Hydraulic Power Pack Units Are Designed To Deliver For Low Noise As Well As Vibration Free Performance And Are Available With Superior Heat Dissipation Properties. We Custom Finished Designs As Per As The Specific Application

Capacity Of Powerpack From 0.5hp To 100hp With Customized Solution Upon Understanding Of Application.

Maximum Working Pressure -700 Bar With Gear Pump / Vane Pump / Variable Pump / Servo Pump



HYDRAULIC AC POWER PACK EQUIPEMENTS



- Hydraulic Gear Pump, Hydraulic Vane Pump, Hydraulic Motor Hydraulic Solenoid Valve, Pressure Relief Valve Direction Control Valve, Flow Control Valve, Check Valve, Pilot Operated Check Valve, Gauge Isolator Valve Hydraulic Mobile/Hand Lever Valve, Hydraulic Oil Level Gauges, Hydraulic Filler Breather, Hydraulic Pressure Gauge, Hydraulic Coupling, Hydraulic Bell Housing, Hydraulic Manifold Block, Hydraulic Oil Dipsticks, Hydraulic

HYDRAULIC DC POWER PACK UNIT

DC MINI HYDRAULIC POWER UNIT We offer a wide range of Hydraulic Power Packs that run on 12V/24V in DC power. 12 Volt is available in 0.5 KW to 2.5KW and 24 Volt in 2 KW & 3 KW. AC is available up to 3HP in single and three phase. Pumps are available

- Lift
- Door To Door Waste Collection Van
- Lift And Crane

Features

- Tank:-8/10/12Ltr,
- Voltage:-12/24V
- Pump:-4 to 10Lpm
- Make:- Vintech Hydraulics.



HYDRAULICS CYLINDER

We are leading Manufacturer of Standard and Customize Hydraulic Cylinders.

Technical Specifaation :

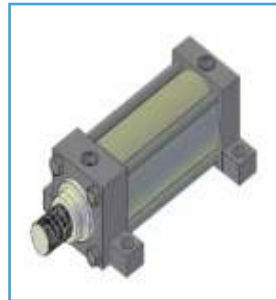
- Single / Double Acting.
- Bore Dia 40mm to 600 mm
- Stroke up to 4000 mm
- Working Pressure up to 600 bar.



Front Flange Mounted Type



Rear Flange Mounted Type



Foot mounted Type



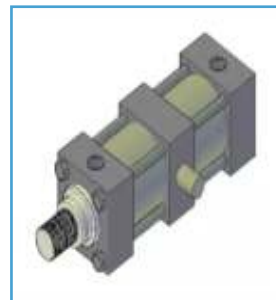
Female Rear Clevis



Swivel Bearing End Type



Clevis at Both End



Trunion Type



Double Rod End Type



Front Flange Mounted Type



Rear Flange Mounted Type



Foot mounted Type



Female Rear Clevis



Swivel Bearing End Type



Clevis at Both End

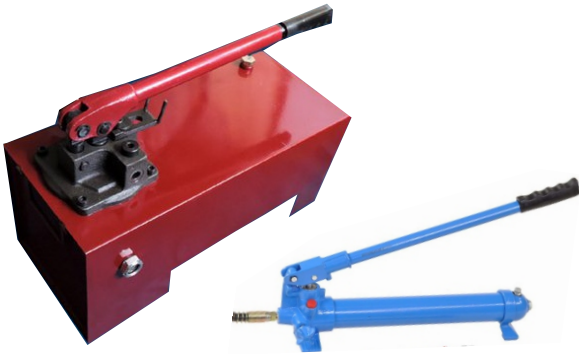
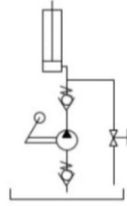


Trunion Type



Double Rod End Type

HYDRAULIC HAND PUMP



DISPLACEMENT	14.6 to 50 CC
MAX. WORKING PRESSURE	200 bar
OIL TANK CAPACITY	4.5 /10/15/20 liters
FORCE REQUIRED ON HANDLE TOP @ 200 bar	5.70 Nm
HYDRAULIC MEDIUM	ISO VG 68 GRADE RECOMMENDED

HAUDRALIC SEALS KIT FOR CYLINDER



Da Bronze Seal



Guide Strip / Soft Tape



Compact DAS Kit



UHS / UNS / DHS



PU Rod Seal



Chavron Set

- Rod Seals
- Piston Seals
- Rod & Piston Seals
- Wiper
- Pneumatic Seals
- Guiders
- Gasket
- O-Ring
- Elastic Spides
- Canvas Seals
- Seal Kits
- Custom Seals

Hard Chrome Plated Rod

Hard Chrome Plated Shafts(hard Chrome Plated Bars) Are Designed To Meet Your Specific Needs For Piston Rod Material In Hydraulic And PneumaticCylinders And Other ApplicationsMost Advanced Techniques Of Surface Removal, Polishing And Hard Chrome Plating Are Used In Manufacturing The Above Bars.

Material Grade:	En8-d, Ck45 Standard Available (en-8/en-31/others As Per Request)
Std Size:	6mm To 300mm
Std Length:	3mtr~ 7mtr (can Provide Cut Lengths As Per Customers Request)
Chrome Layer Thickness:	$\varnothing > 20$ Mm: Min, 15 Micron $\varnothing > 20$ mm: Min. 20 Micron
Surface Roughness:	0.2 Ra
Surface Hardness:	Min 800hv
Straightness:	$\varnothing 16$ mm: Max 0.3 Mm/1000mm $\varnothing > 16$ mm:max 0.2 mm/1000mm
Od Tolerance:	F7/f8



Seamless Honed Tube & Ready to Hone Tube

We Have In Store For Our Clients, A Resilient Range Of Honed Tubes That Find ApplicationIn PneumaticAnd Hydraulic Cylinders. Made From Fine Quality Seamless Pipe Our Range Is Made Use Of In Several Industries And Machinery Including Earth Moving, Machinery, Hydraulics, Material Handling Etc.



Delivery Condition:	DIN2391 BK + S St52 Honed / SRB / CDS
ID Tolerance (Honed/SRB):	H8
Dimensions:	ID 32 ~ ID 600
Length:	3 mtr ~ 7 mtr

Cew Tubes For Hydraulic Cyclinders

Delivery Condition:	ST52.3 CEW Tubes
ID Tolerance (Honed/SRB):	H8/H9
Dimensions:	ID25 ~ ID 90
Length:	3 mtr ~ 5.8 mtr

HYDRAULIC OIL COOLER & HEAT EXCHANGER



Hydraulic India make Oil Coolers are having a range of manufacturing upto 2500 LPM oil flow rate (4,50,000 Kcal/Hr.). Normally oil cooler are available from 3/8" diameter copper tubes. Though these oil coolers are compact in size and perhaps with lower prices but it is easily blocking by dirt and scaling inside the copper tubes. In our Oil cooler we use 5/8" diameter tubes to avoid this big issue. You will definitely rewarded with less maintenance and longer life of Oil cooler.

Model	Shell OD	LPM	Coupling size of Oil Connection in BSP	Coupling size of Water Connection in BSP	Nos. of Copper tubes	Total length End to End
HI 1	4"	14	3/4"	3/4"	6	20"
HI 2	4"	18	3/4"	3/4"	6	24"
HI 3	4"	23	3/4"	3/4"	6	26"
HI 4	4.5"	32	3/4"	3/4"	8	24"
HI 5	4.5"	36	3/4"	3/4"	8	26"
HI 6	4.5"	41	3/4"	3/4"	10	26"
HI 7	5"	45	3/4"	3/4"	10	26"
HI 8	4.5"	50	3/4"	3/4"	8	30"
HI 9	5"	54	3/4"	3/4"	10	30"
HI 10	5"	68	3/4"	3/4"	10	36"
HI 11	5"	77	3/4"	3/4"	12	36"
HI 12	6.5"	86	1"	1"	12	30"
HI 13	6.5"	90	1"	1"	16	30"
HI 14	6.5"	99	1"	1:	12	36"
HI 15	6.5"	104	1"	1"	16	36"
HI 16	6.5"	113	1"	1.1/4"	16	42"
HI 17	6.5"	135	1.1/4"	1.1/4"	16	48"
HI 18	6.5"	158	1.1/4"	1.1/2"	16	54"
HI 19	6.5"	180	1.1/4"	1.1/2"	16	60"

Tandem Pumps

FEATURES :

High Pressure | Less Noise | More Efficiency | Less Pressure Drop | More Life

Group 0P - 0P :

0P Pumps are available in two bolt & four bolt flanges with parallel & taper shafts.

Displacement : 2.4 Lpm to 14 Lpm Maximum pressure @ **200 Bar**



Group 1P - 1P :

Hydraulic India has developed this product for **High Pressure Applicaton**, which can use upto **230 bar** maximum pressure. Pumps are available in two Bolt & Four Bolt Flanges with parallel, Spline & Shafts.

Displacement : 14 Lpm to 82 Lpm. Maximum pressure @ **230 bar**.



Group 1P - 0P :

Pumps are available in two bolt & four bolt flanges with parallel, spline & taper shafts.

Displacement : 8 Lpm to 48 Lpm Maximum pressure @ **200 Bar**



Group 2P - 1P :

Pumps are available in two Bolt & Four Bolt Flanges with parallel, Spline & Shafts.

Displacement : 30 Lpm to 140 Lpm. Maximum pressure @ **200 bar**.

Group 2P - 2P :

Pumps are available in two bolt & four bolt flanges with parallel, spline & taper shafts.

Displacement : 60 Lpm to 200 Lpm Maximum pressure @ **200 Bar**



Tandem Pumps

Group 2P Pump Technical Data :



Model	Displacement		Max Pressure		Port Size (BSP)	
	cc/rev	lpm	psi	bar	inlet	outlet
5050	15.13	22.7	3000	207	1"	3/4"
5070	21.33	32	3000	207	1"	3/4"
5090	27.33	41	3000	207	1"	3/4"
5105	31.8	47.7	3000	207	1"	3/4"
5120	36.33	54.5	3000	207	1"	3/4"
5146	44.33	66.5	2525	174	1"	3/4"
5158	47.87	71.8	2525	174	1"	3/4"
5220	66.67	100	2000	138	1"	3/4"
5265	80.00	120	1450	100	1"	3/4"

Group 2P High Pressure Pump Technical Data :

Pump Type	Nominal Delivery lpm @ 1500 rpm	Pressure in bar	Max. Speed rpm	Ports 4 hole monunting	
				Section	Delivery
G322	28.2	250	3000	G 3/4"	G 3/4"
G328	40.0	250	3000	G 3/4"	G 3/4"
G332	46.0	250	2500	G 1"	G 3/4"
G336	51.0	250	2500	G 1"	G 3/4"
G342	60.0	230	2300	G 1"	G 3/4"
G346	66.0	230	2300	G 1"	G 3/4"
G350	72.0	200	2100	G 1"	G 3/4"
G355	79.0	200	1750	G 1"	G 3/4"
G360	86.0	180	1750	G 1"	G 3/4"



SPECIAL APPLICATION PUMPS



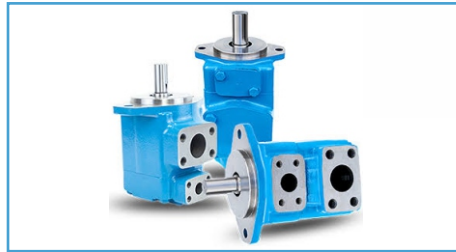
Variable Vane Pump

There are 2 types of Vane pumps Fixed Displacement Vane pump and Variable Displacement Vane pump. The output of a fixed displacement pump remains constant at a given pump speed. The output of a variable displacement pump can be changed by altering the geometry of the displacement chamber.

Variable Vane pump finds its uses in machine tool industry, automobile industry, construction industry and various other industry

HYDRULICS provides high quality Variable Displacement Vane pump in 6 different Flows and 1 pressure setting.

There are 2 types of vane pumps V1 And V2.



HYDRAULIC MOTOR

Hydraulic motors are essentially mechanical actuators that work to convert fluid power into the mechanical energy needed to power a machine. Fluid power is the driving force behind all hydraulic operations, including the way motors work.



Advantages :- Higher degree of accuracy in movement. Work great in harsh environments with water, dirt and other contaminants as the system is already sealed to keep the hydraulic fluids contained. Can stop and start easily under large loads without causing damage

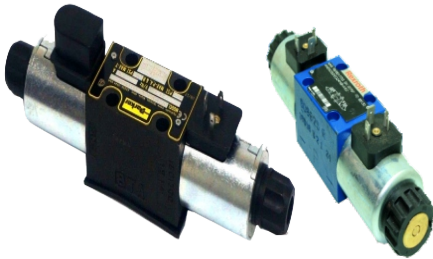
HYDRAULIC OIL AND AIR FILTER



HYDRAULIC INDUSTRIAL ACCUMULATOR



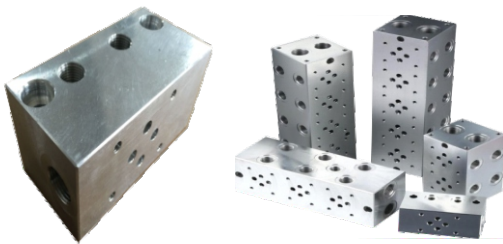
HYDRAULIC SOLENOID VALVE



HYDRAULIC MOBILE VALVE / HAND LEVER VALVE



HYDRAULIC MANIFOLD BLOCK



HYDRAULIC PILOT OPERATED CHECK VALVE



HYDRAULIC SAE FLANGE



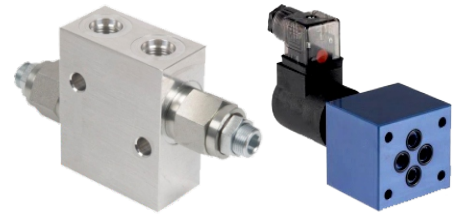
HYDRAULIC GEAR COUPLING



HYDRAULIC DIRECTION CONTROL VALVE



HYDRAULIC PRESSURE RELIEF VALVE



HAUDRATIC HOSE PIPE



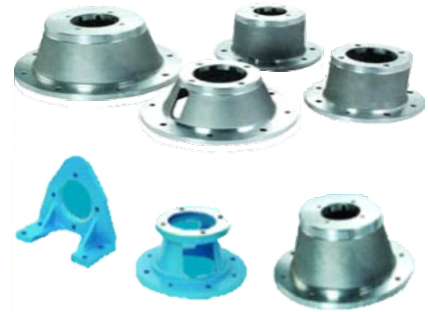
HAUDRATIC FITTINGS



HYDRAULIC PRESSURE GAUGE



HYDRAULIC BELL HOUSING



HYDRAULIC OIL LEVEL GAUGES



HYDRAULIC OIL FILLER BREATHER





Cement Industries



Construction & Infrastructure Industries



Mining Industries



Marine Industries



Railways



Power Plant

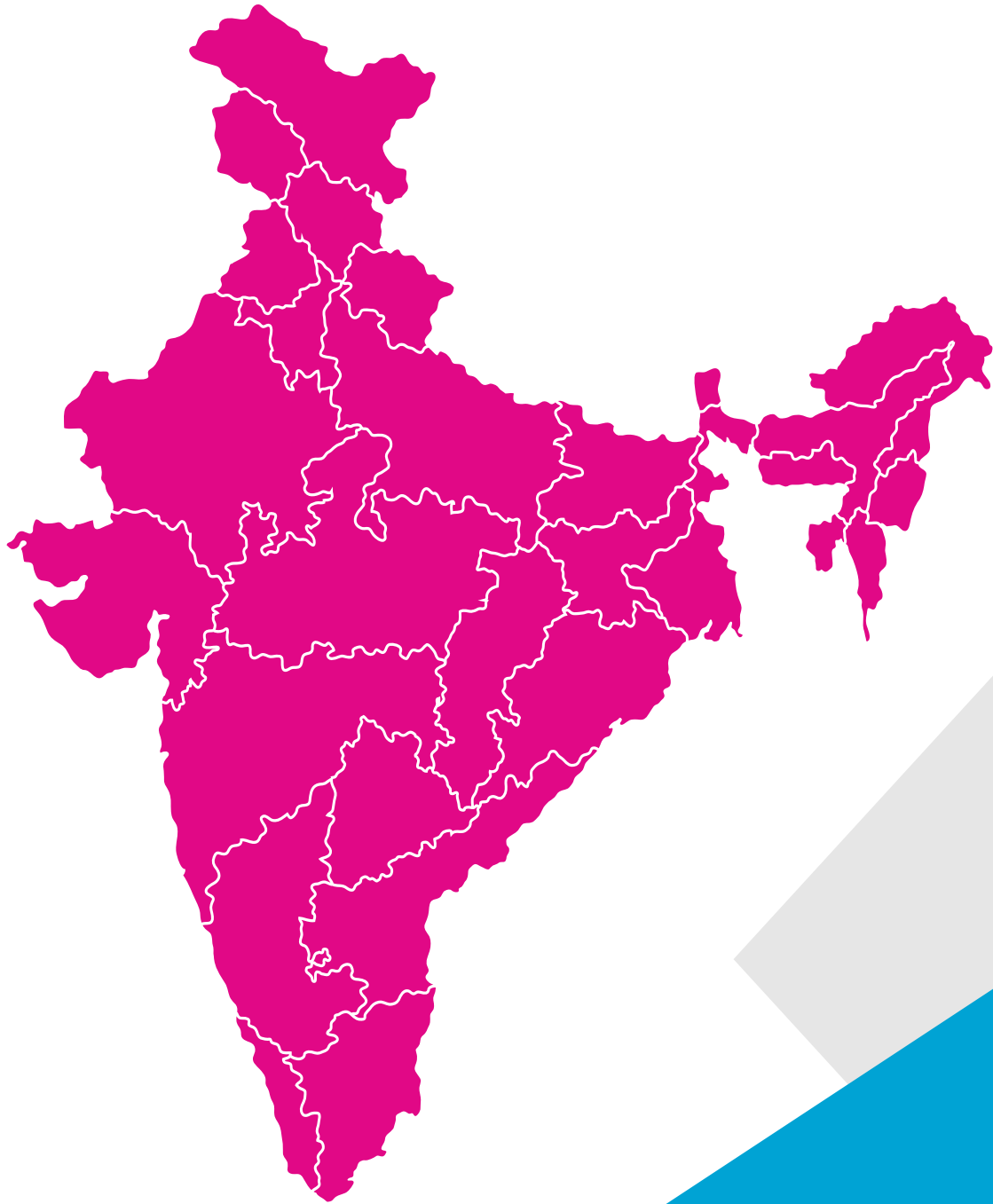


Steel Plant



Food Processing Industries

- Corporation
- Agriculture Industries.
- Bricks Macking Machinery.
- Construction Machinery.
- Copper, Alluminium & Alloy Mfg. Industries.
- Cellulose & Paper Mfg. Industries.
- Chemical Industries.
- Die-Casting and Plastic.
- Processing Machine.
- Hospital Equipment Mfg. Industries.
- Mining, Steel & Cement industries.
- Material Handling Technology.
- Presses & Shering Machines.
- Process & Shearing Machines.
- Process industries.
- Recycling Machinery.
- Shio Building & Off Shore Engineering.
- Sugar and Food Processing.
- Textile Machinery.
- Test & Gauging Stands.
- Vehicles and Military Engineering.
- Winches & Cranes.
- Waste Disposal and Environmental
- Engineering And Many More.....



Vintech
Hydraulics

AS ISO 9001:2015 CERTIFIED COMPANY



Mo. +91 85117 62085



Sales : +91 78748 64292



H.O. : Plot No. 65, Shirdidham Residency,
Nr. Mansarovar Society, Devadh Gam,
Surat - 394210



Work Shop :- Shed No. B-21, Shree Mahalaxmi Estate,
Opp. Wandervat Talav, Behind Gujarat
Offset, Nr. Shankeshwar Industrial Park,
Vatva, Ahmedabad - 382440



www.vintechhydraulics.in



www.vintechhydraulics.com



sales@vintechhydraulics.in



vintechhydraulic@gmail.com